



450W / 550W / 650W



140(L)x150(W)x86(H) mm

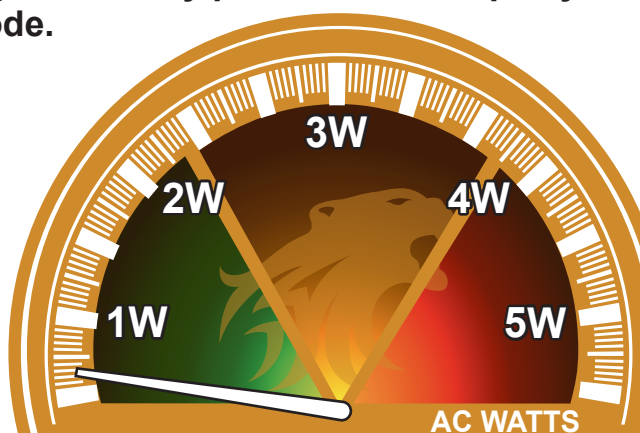


## Features

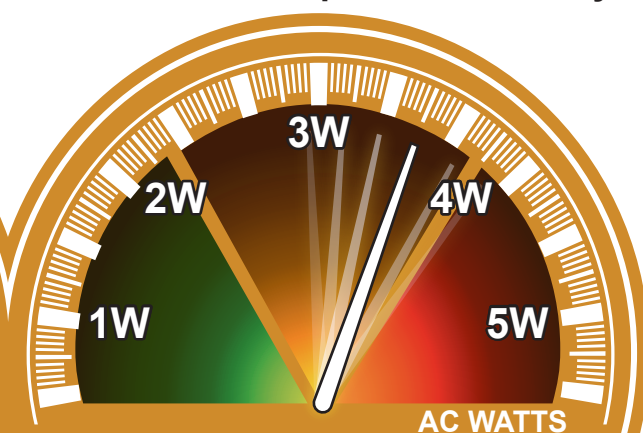
- Achieve 86% efficiency at 50% load under 230Vac, go beyond 80 PLUS Bronze standard.
- Flat peripheral cable design helps to facilitate system installation and enhance internal airflow.
- Intel ATX12V version 2.31 compliant.
- High efficiency 5Vsb circuit helps system to meet EU ErP Lot 6 2013 standards. (lower than 0.5W power consumption at standby mode)
- 6+2 pin PCI-E connector supplied supporting extreme graphic cards.
- 12cm fan with thermal programmed speed controller providing silent cooling performance.
- Active PFC switching circuit improves Power Factor value up to 0.99, reducing AC line reactive power loss to minimum level.
- Extending CPU connector cable to 60cm facilitates installation with bottom-mounted PSU chassis.
- Protected by Over Power, Over Voltage, Over Current, Short-Circuit, and Brown Out protections circuits.
- Reliable components and Powerful +12V rail output offer continuous stable electricity to meet year-round system requirements.
- Full-scale EMC filtering protects your system against radiation interferences.

## ErP Lot 6 2013 Support

High efficiency performance helps system consume < 0.5W power at standby mode.



ErP Lot 6 2013 system  
@ standby



Non ErP Lot 6 system  
@ standby

## Specifications

		N450-MA		N550-MA		N650-MA	
AC Input	Input Voltage	200-240VAC		47-63Hz			
	Input Current	3.5A		4A		5A	
DC Output	+3.3V	16A	100W	18A	110W	20A	120W
	+5V	16A		18A		20A	
	+12V	34A	408W	42A	504W	50A	600W
	-12V	0.3A	3.6W	0.3A	3.6W	0.3A	3.6W
	+5Vsb	2.5A	12.5W	2.5A	12.5W	2.5A	12.5W
Total Power		450W		550W		650W	

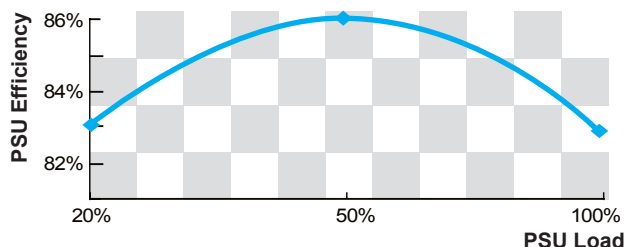
## Extremely Silent fan

12cm fan with thermal programmed speed controller providing silent cooling performance.



## Extremely High Efficiency

Achieve 86% efficiency at 50% load under 230Vac, go beyond 80 PLUS Bronze standard.



## Flat Peripheral Cables

Flat peripheral cable design helps to facilitate system installation and enhance internal airflow.

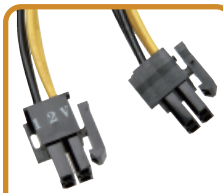


## Connectors



### Main Power 24P

- 450W x 1
- 550W x 1
- 650W x 1



### +12V CPU

- 450W x 1
- 550W x 1
- 650W x 1



### FDD

- 450W x 1
- 550W x 1
- 650W x 1



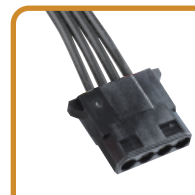
### 6+2P(8P) PCI-E

- 450W x 2
- 550W x 2
- 650W x 4



### SATA

- 450W x 5
- 550W x 5
- 650W x 9



### 4P Molex

- 450W x 4
- 550W x 4
- 650W x 4

